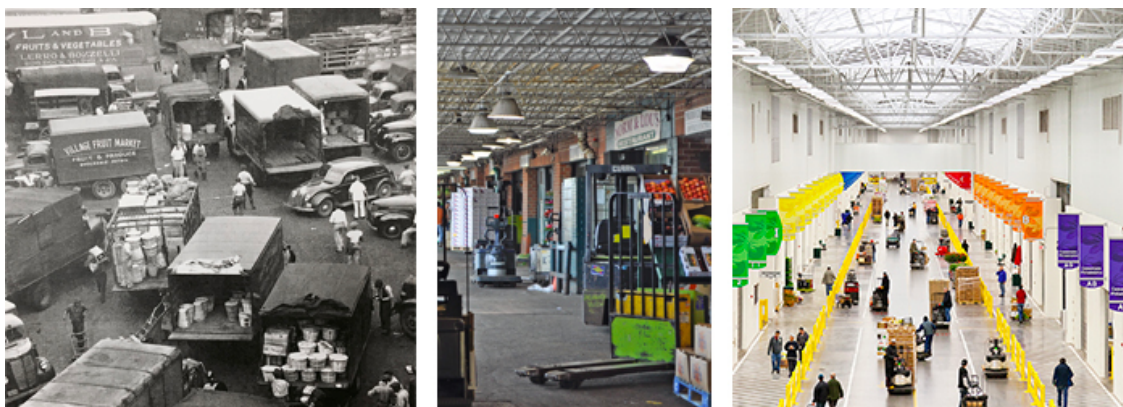


[Click here to learn more about PWPM!](#)



All the best, all right here.



Our Roots Run Deep.

From Dock Street to the Food Distribution Center to 6700 Essington Ave.

Centuries before the state-of-the-art Philadelphia Wholesale Produce Market opened in 2011, produce played a major role in the Philadelphia region. Dock Street, which was first identified by William Penn as a good place for ships to dock, became a mecca for commerce and the first wholesale produce market. Ben Franklin was instrumental in petitioning city leaders to keep the area clean so that the food trade could flourish there. By the mid 20th century, Philadelphia's City Planning Director, Edmund Bacon, convinced the city to buy the land around Dock Street to invest in the city's infrastructure and the produce merchants moved to the newly created Food Distribution Center in South Philly. After 52 years, another new era of produce buying and selling began at the Philadelphia Wholesale Produce Market on Essington Avenue.

[Read More](#)



On the MARC, More Fruits & Vegetables for Food Banks

Did you know that the Mid-Atlantic Regional Cooperative (MARC) is housed inside the Philadelphia Wholesale Produce Market?

What is MARC? MARC is a regional produce distribution system for FEEDING AMERICA food banks. Director, James DeMarsh, explains “We distribute approximately 1.5 million pounds of produce a month to 23 participating food banks from New England to Virginia.” Having the PWPM as a hub is a great benefit because it is centrally located and provides storage, procurement, and logistics options for large quantities of produce. “Our goal is to get more healthy and nutritious foods into food banks,” he says.

Learn More

Meet the Merchants!

The Philadelphia Wholesale Produce Market is made up of 21 unique wholesalers. Each business has its own story and history. Every month, we'll give you a brief glimpse into two of them.

Collotti & Sons - Units I-7 & I-8



Family owned and operated since 1975, Collotti & Sons takes pride in representing growers/shippers from all over the world. Their knowledgeable sales staff believes in treating everyone with integrity and respect and their motto is “we’re not happy unless you’re happy.”

Phone 215-389-3335 | Email info@collotti.com | Web collotti.com

Read More



USDA AMS Specialty Crops Inspection Division Unit C-2(Rear)

Housed within the Philadelphia Wholesale Produce Market, the USDA AMS Specialty Crops Inspection Division provides user-fee based official inspection and grade certification services of fresh fruits and vegetables as well as quality enhancement services.

Phone 215-336-0845 | Email bill.madara@usda.gov | Web ams.usda.gov

Read More



April Showers?
*We got you covered at the
fully-enclosed, fully-refrigerated
Philadelphia Wholesale
Produce Market!*

Are you ready for April?

April 1 - April Fool's Day

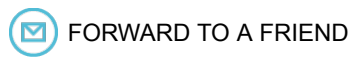
April 14 - Palm Sunday

April 19 - Good Friday

April 19 to 27 - Passover

April 21 - Easter

April 22 - Earth Day



Copyright © 2019 Philadelphia Wholesale Produce Market, All rights reserved.

Our mailing address is:

6700 Essington Ave, Philadelphia, PA 19153